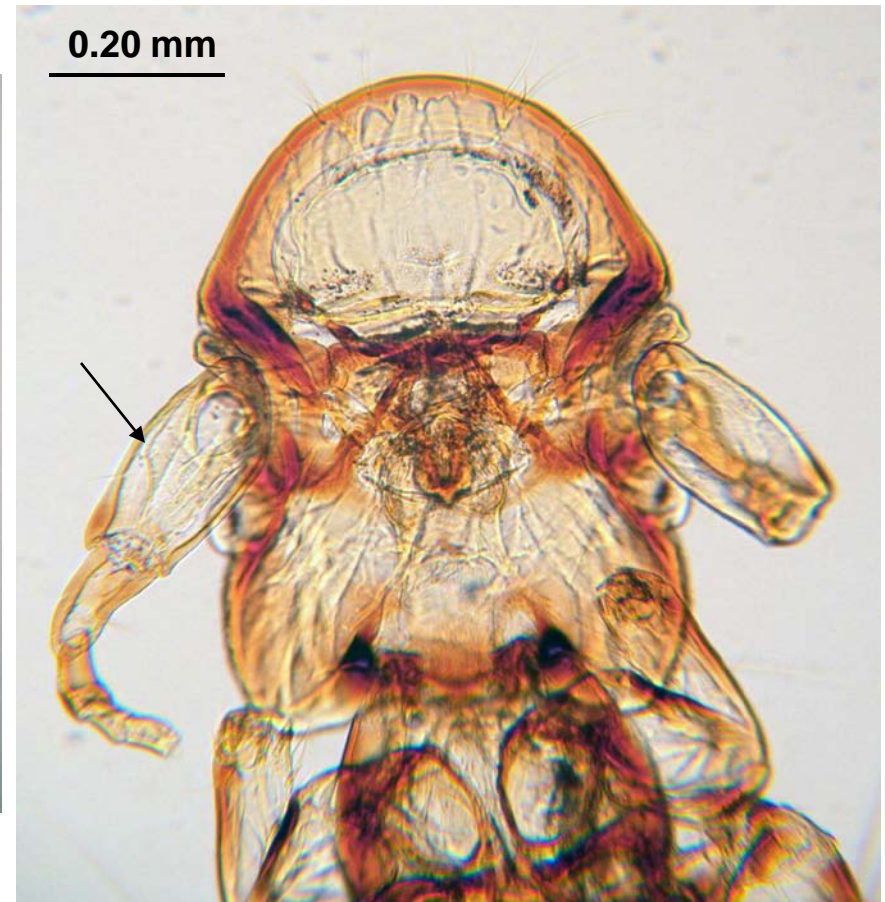
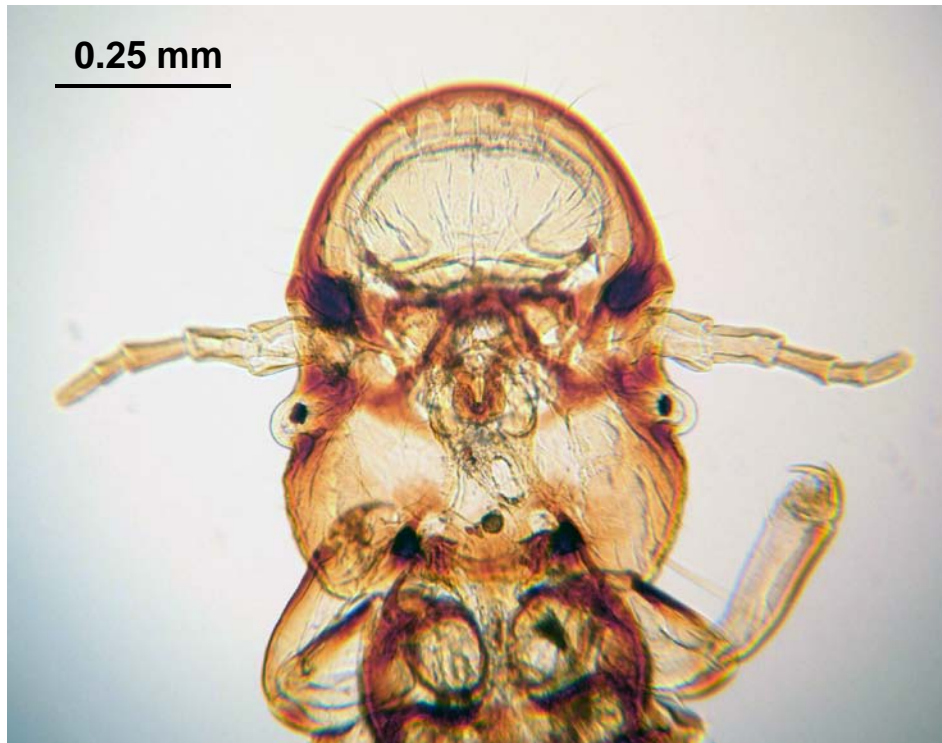
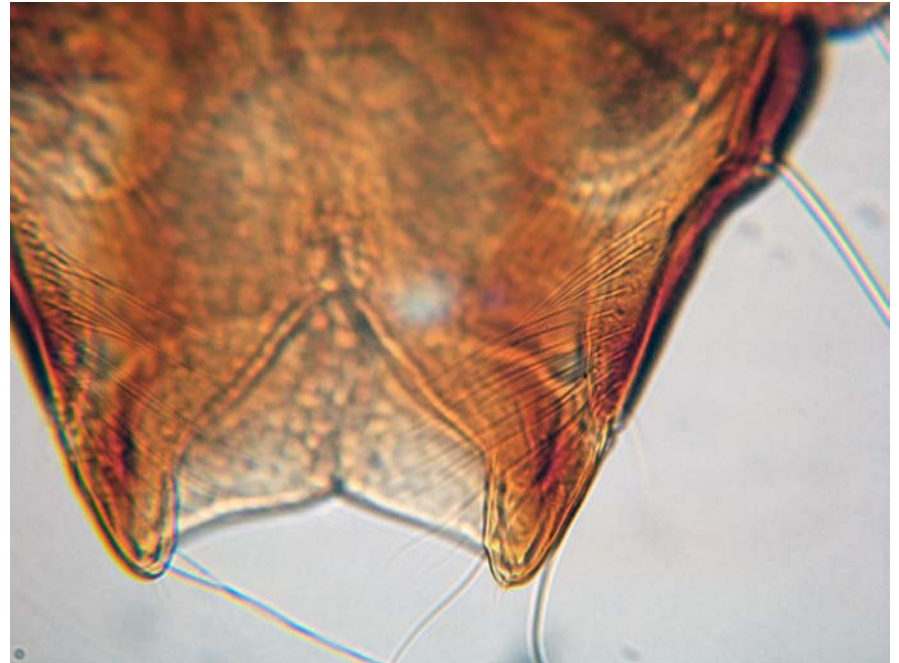
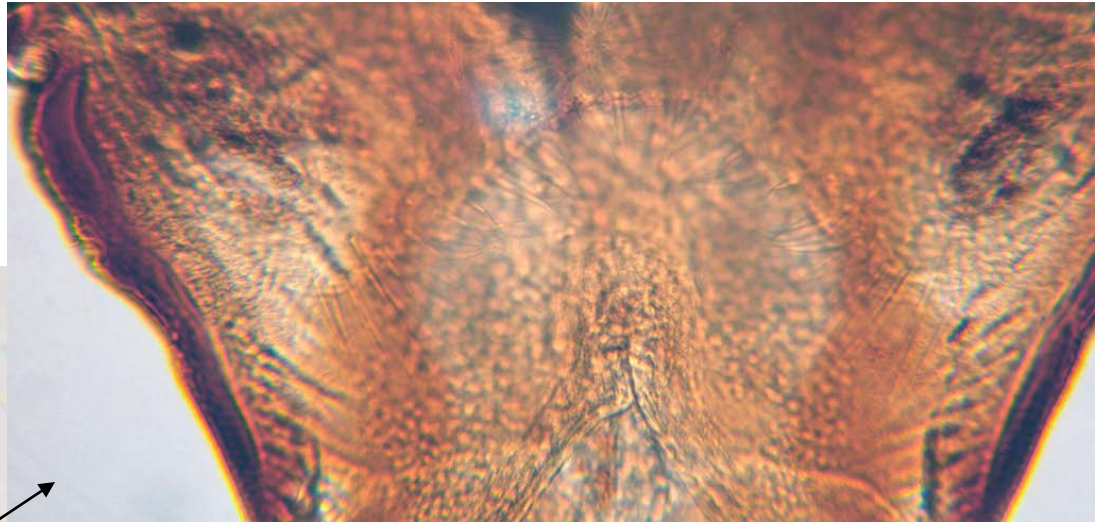


*Falcoliperus* sp.: female (left); male (right). Note that enlarged antennal segment (arrow) is a sexually dimorphic (male) character in this genus.

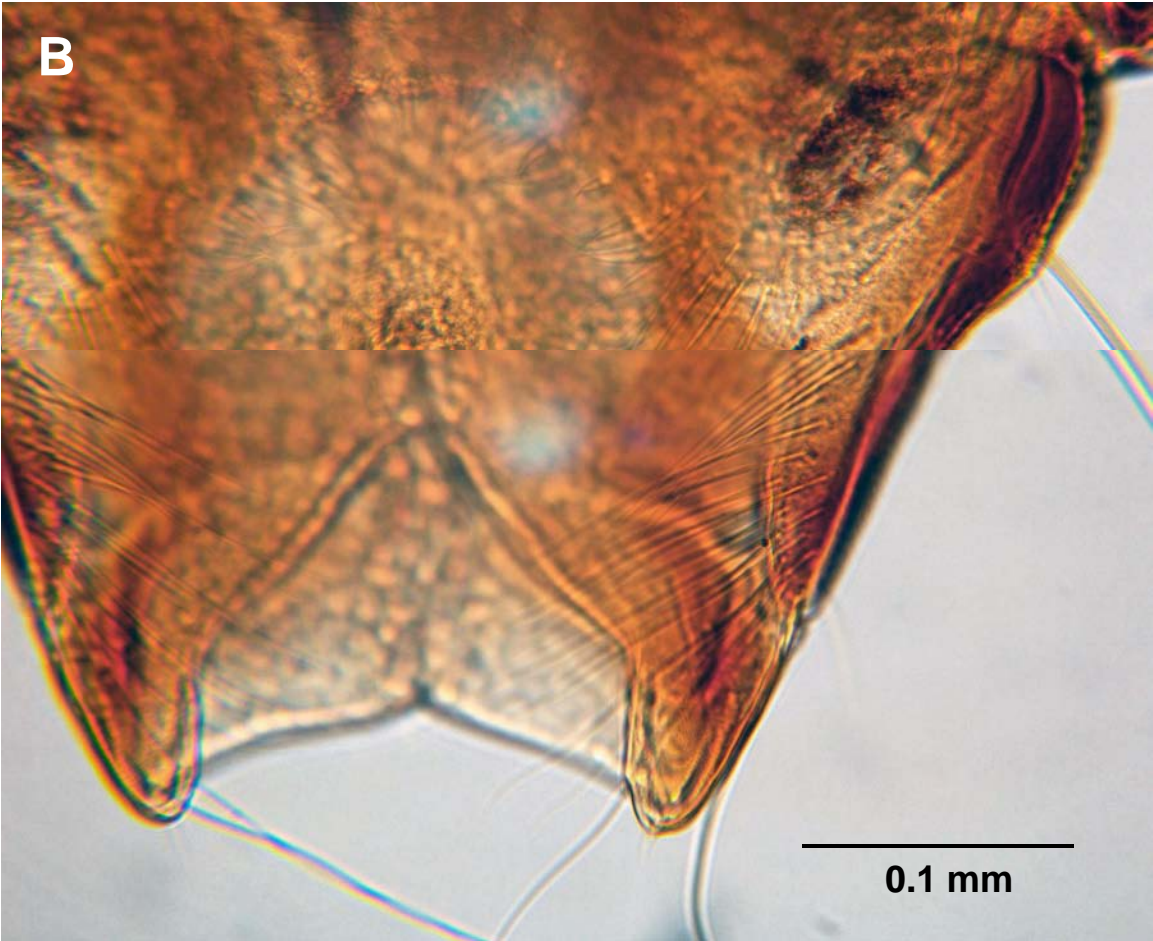
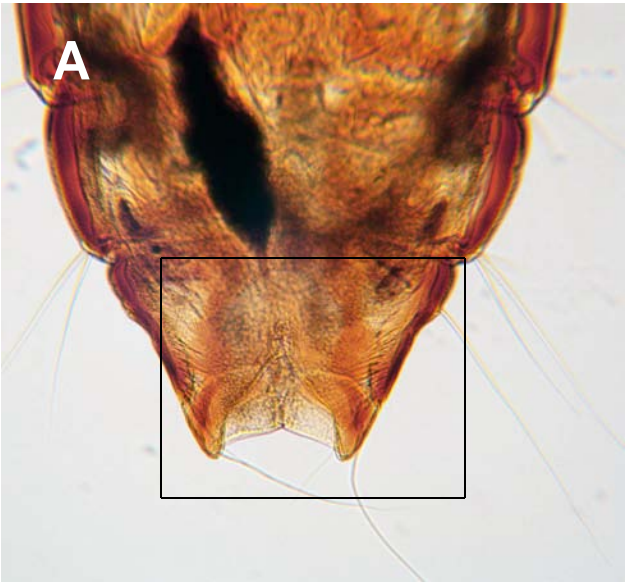


*Falcoliperus* sp.; female, posterior.

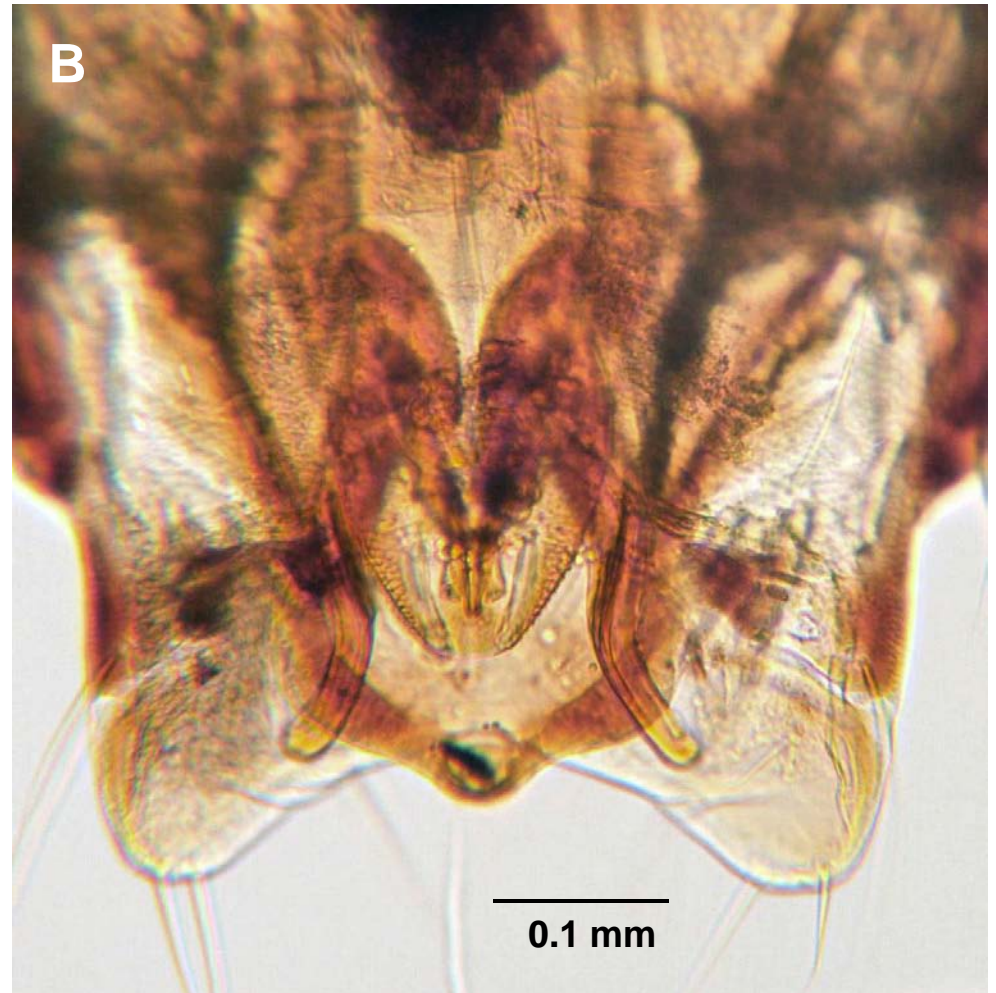
Boxes 1 & 2 enlarged at right.



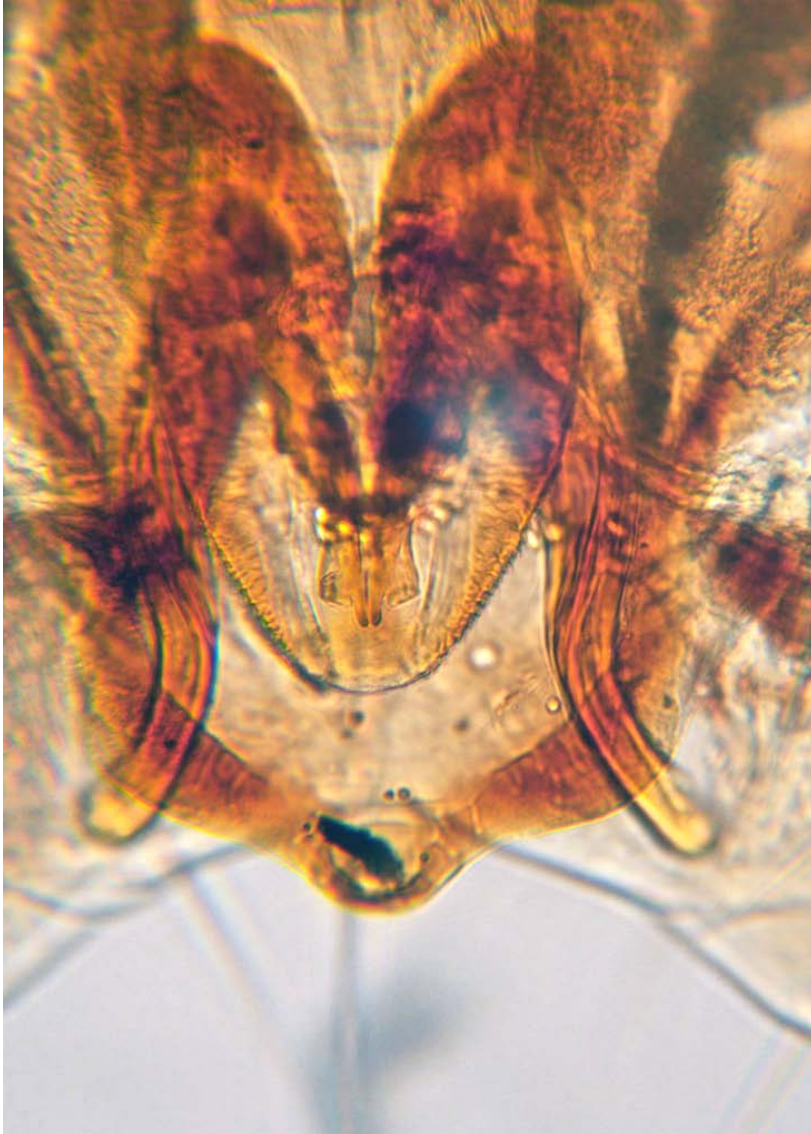
*Falcoliperus* sp.; female, posterior. Box in A enlarged (as composite) in B.



*Falcoliperus* sp.; male genitalia. Box in A enlarged in B.



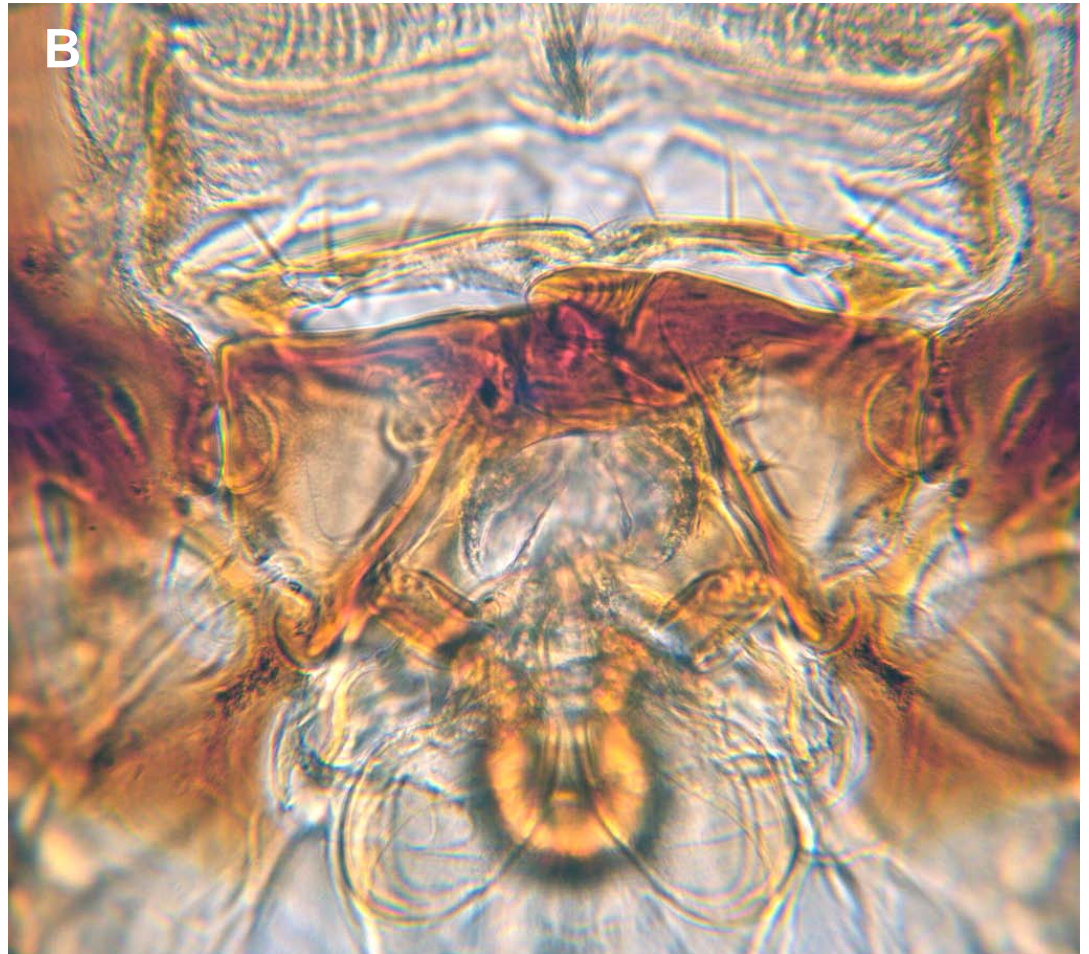
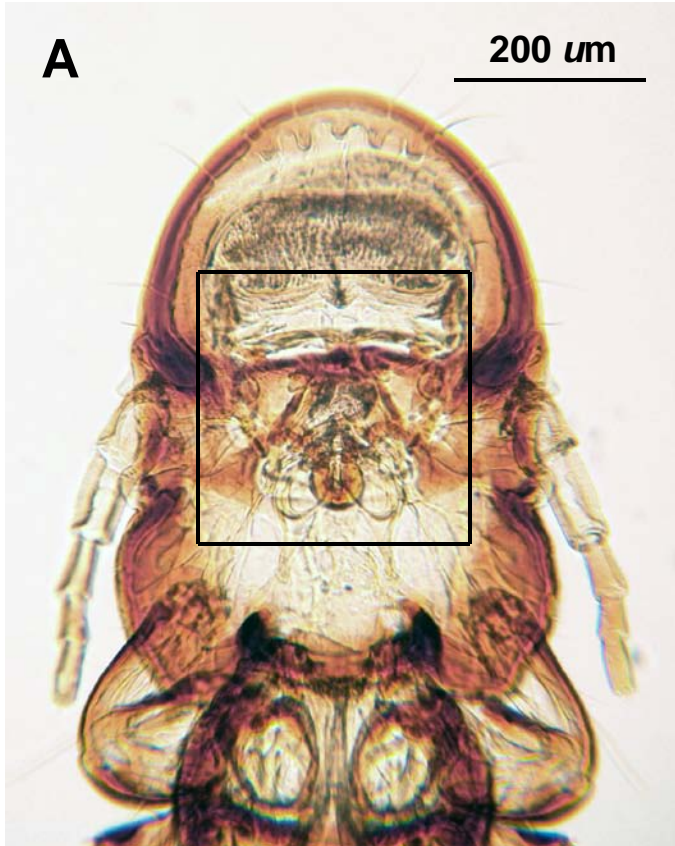
*Falcoliperus* sp.; distal male genitalia (2 individuals), higher magnification.



*Falcoliperus* sp.; patches of setae (arrows) lateral to male genitalia.



*Falcoliperus* sp.; female, anterior (mandibles, box in A enlarged in B).



*Falcoliperus* sp.; male, paratergal plates with “pitted” appearance.

